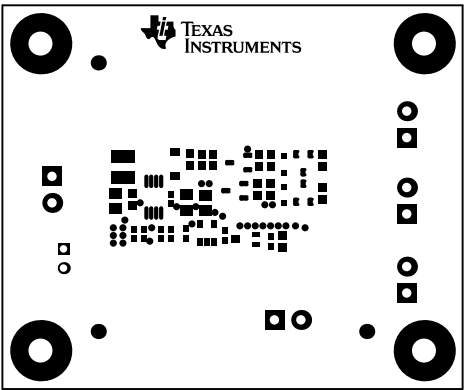
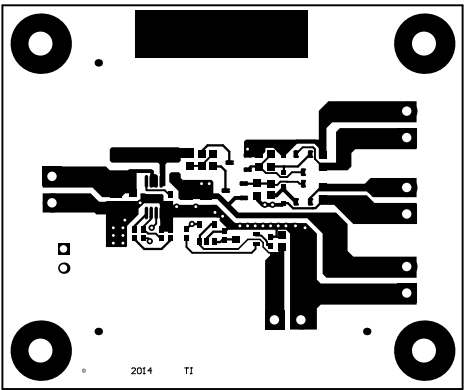


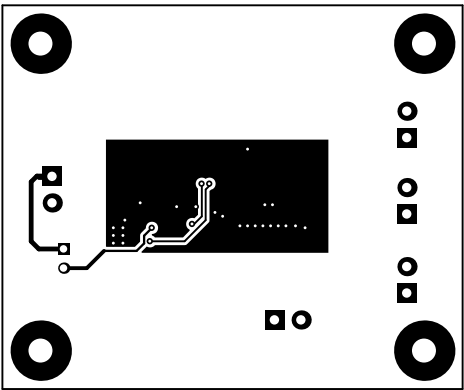
ALL ARTWORK VIEWED FROM TOP SIDE	BOARD #:	PMP9770	REV:	E1	SUN REV:	Not In VersionControl
LAYER NAME =	Top Overlay					
PLOT NAME =	Top Overlay					
GENERATED :	12/29/2014	5:04:16 PM	TEXAS INSTRUMENTS			



ALL ARTWORK VIEWED FROM TOP SIDE	BOARD #:	PIP9770	REV:	E1	SUN REV:	Not In VersionControl
LAYER NAME =	Top Solder					
PLOT NAME =	Top Solder Mask					
GENERATED :		12/29/2014		5:04:17 PM		TEXAS INSTRUMENTS

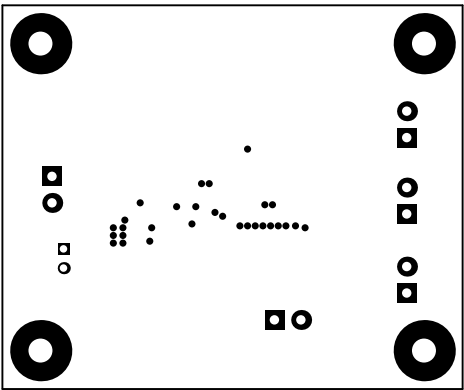


ALL ARTWORK VIEWED FROM TOP SIDE	BOARD #:	PIP9770	REV:	E1	SUN REV:	Not In VersionControl
LAYER NAME =	Top Layer					
PLOT NAME =	Top Layer					
GENERATED :	12/29/2014		5:04:17 PM		TEXAS INSTRUMENTS	

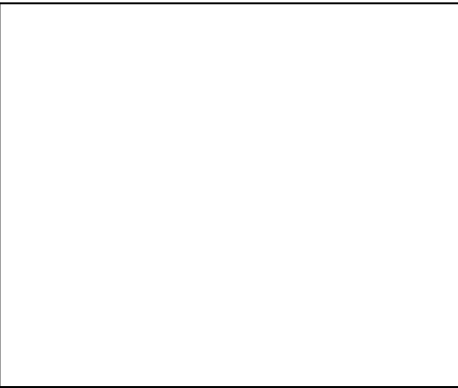


Not In Version Control





ALL ARTWORK VIEWED FROM TOP SIDE	BOARD #:	PHPB270	REV:	E1	SUN REV:	Not In VersionControl
LAYER NAME =	Bottom Layer					
PLOT NAME =	Bottom Layer			GENERATED : 12/29/2014 5:04:18 PM		TEXAS INSTRUMENTS



ALL ARTWORK VIEWED FROM TOP SIDE	BOARD #:	PIP9770	REV:	E1	SUN REV:	Not In VersionControl
LAYER NAME =	Bottom Solder					
PLOT NAME =	Bottom Solder Mask			GENERATED :	12/29/2014 5:04:19 PM	TEXAS INSTRUMENTS



ALL ARTWORK VIEWED FROM TOP SIDE	BOARD #:	PIP9770	REV:	E1	SUN REV:	Not In VersionControl
LAYER NAME =	Bottom Overlay					
PLOT NAME =	GENERATED : 12/29/2014 5:04:20 PM				TEXAS INSTRUMENTS	

Symbol	Quantity	Finished Hole Size	Material	Hole Type
	37	16.25mm (0.6417in)	1719	Through
	3	16.25mm (0.6417in)	1719	Through
	10	16.25mm (0.6417in)	1719	Through
	4	12.25mm (0.4823in)	1719	Through
All Total				

